
MASTER SERVICING PLAN UPDATE AND PUBLIC INFORMATION CENTRE PREVIEW

OCTOBER 10, 2023



OVERVIEW

- Where we are in the project?
- General Overview of Existing Conditions
- Transportation
- Water
- Wastewater
- Stormwater
- Public Consultation Centres
- Next Steps
- Questions?

WHERE WE ARE IN THE PROJECT?



Investigations and Modelling is complete.



Bottlenecks in the system have been identified for each type of infrastructure.



Alternatives have been generated for addressing existing and future needs.



Time to complete public consultation and then finalize reporting based on public and stakeholder feedback.

EXISTING CONDITIONS – LONG SAULT AND INGLESIDE



Transportation

No existing bottlenecks identified

Improvements to address lighting, future reconstructions and key safety issues.



Water

Water Treatment deficit is an issue

Changes in how industry looks at Fire Flow



Wastewater

Minor bottlenecks in the collection system around County Road 36

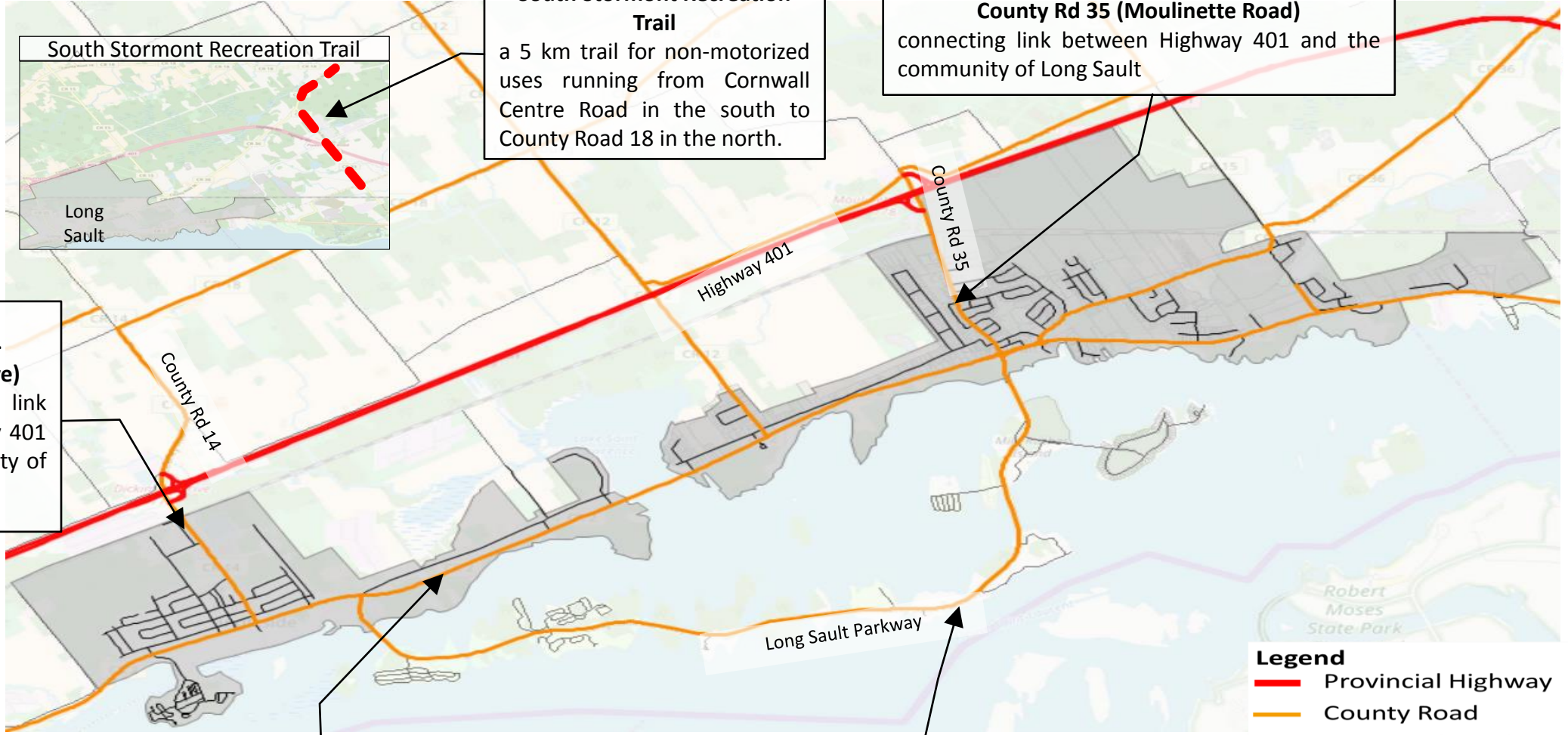
Future identified areas of concern within original Town Site.



Stormwater

No existing stormwater management in existing Town Sites.

New development have individual management systems.



South Stormont Recreation Trail

Long Sault

South Stormont Recreation Trail
 a 5 km trail for non-motorized uses running from Cornwall Centre Road in the south to County Road 18 in the north.

County Rd 35 (Moulinette Road)
 connecting link between Highway 401 and the community of Long Sault

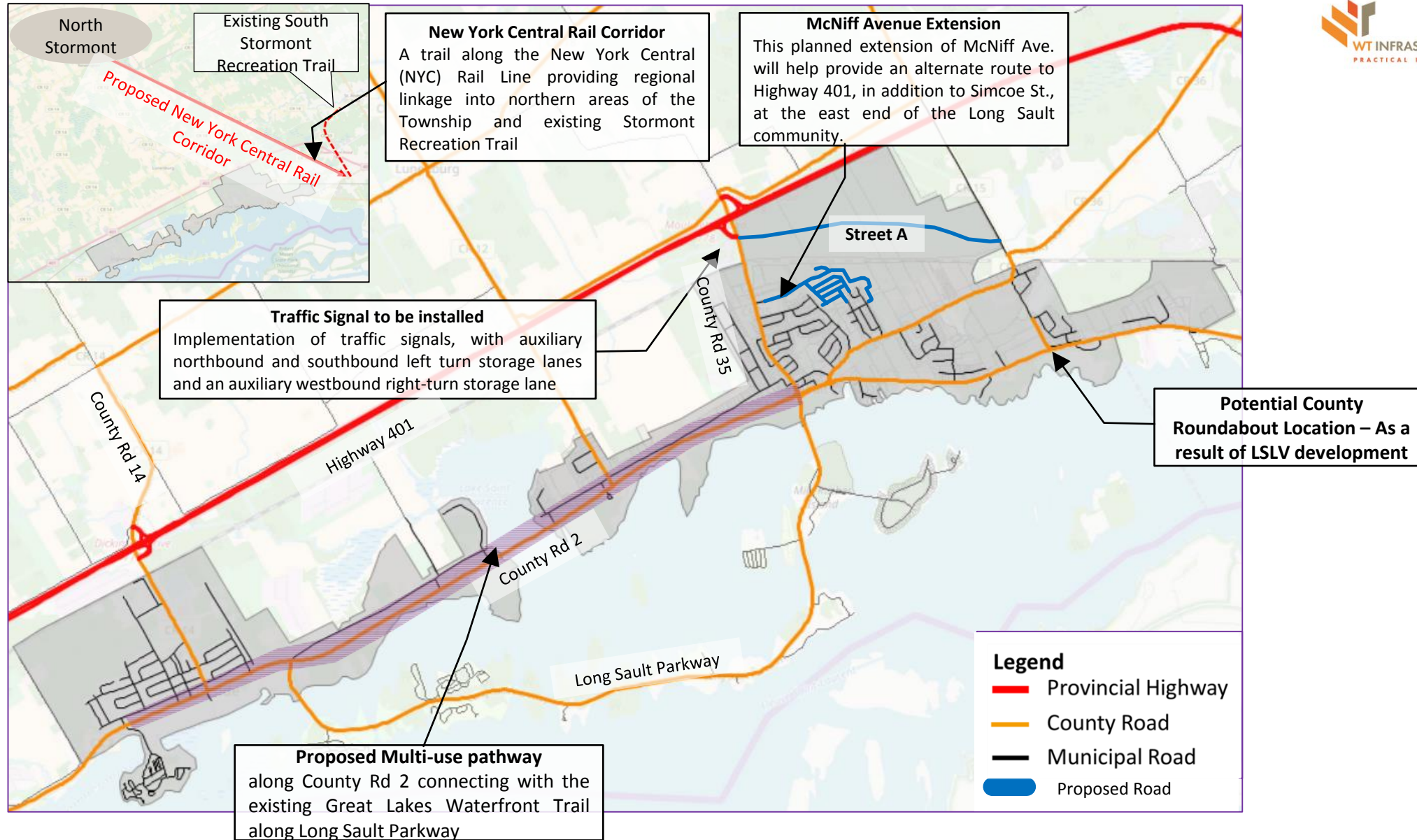
County Rd 14 (Dickinson Drive)
 connecting link between Highway 401 and the community of Ingleside

County Rd 2
 Primary waterfront arterial route between the communities allowing for conveyance to the west to South Dundas and to the east into Cornwall.

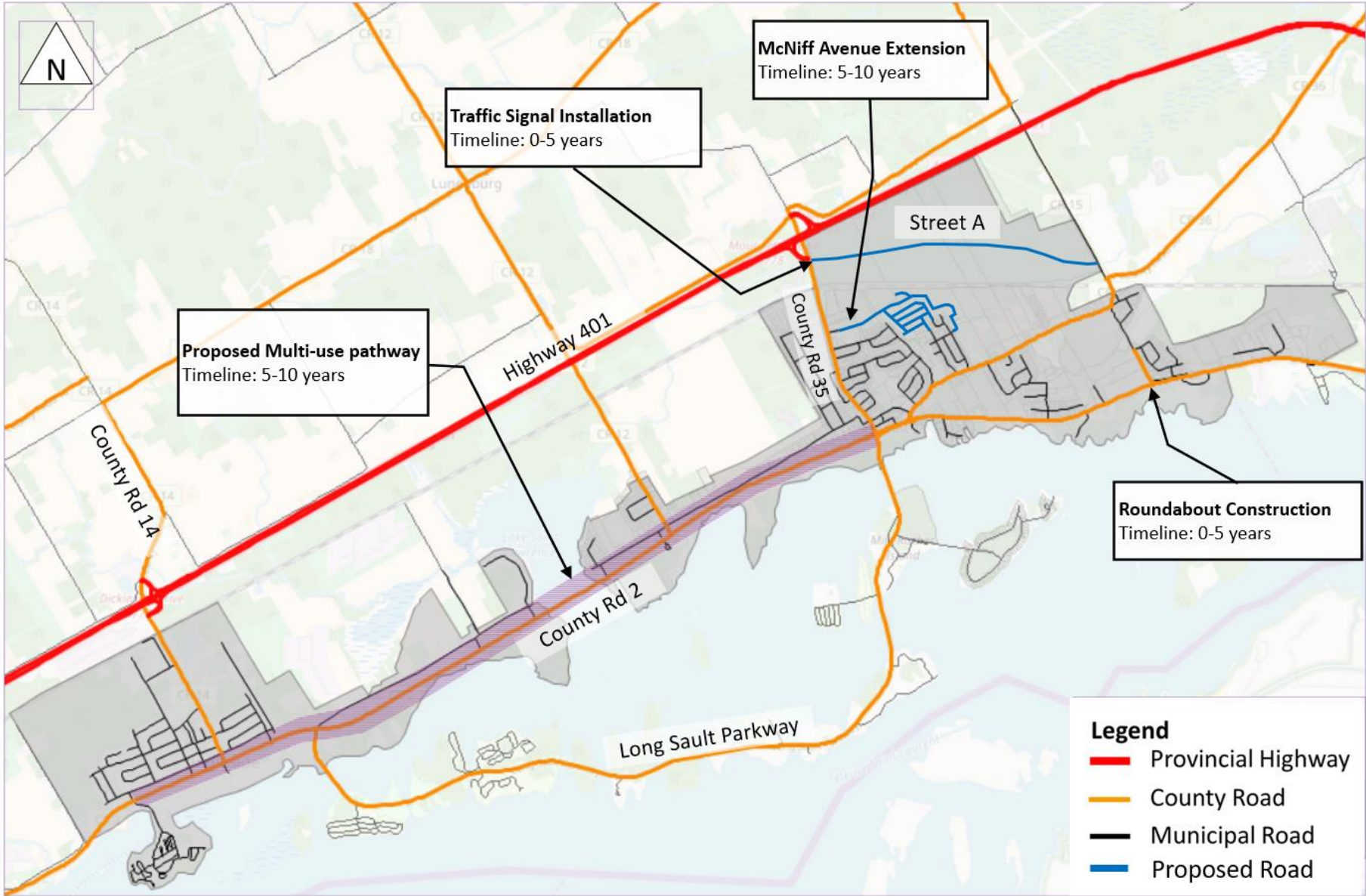
Great Lakes Waterfront Trail
 Part of the 3,000 km province-wide trail network that runs along the shores of the Great Lakes. The trail runs separately on a dedicated 3 m wide path from Morrisburg to Cornwall, except for the Long Sault Parkway where it is an on-road trail shared with cars (no paved shoulder)

Legend

- Provincial Highway
- County Road
- Municipal Road



TRANSPORTATION SYSTEM – PROJECT PRIORITIZATION



Legend

- Provincial Highway
- County Road
- Municipal Road
- Proposed Road

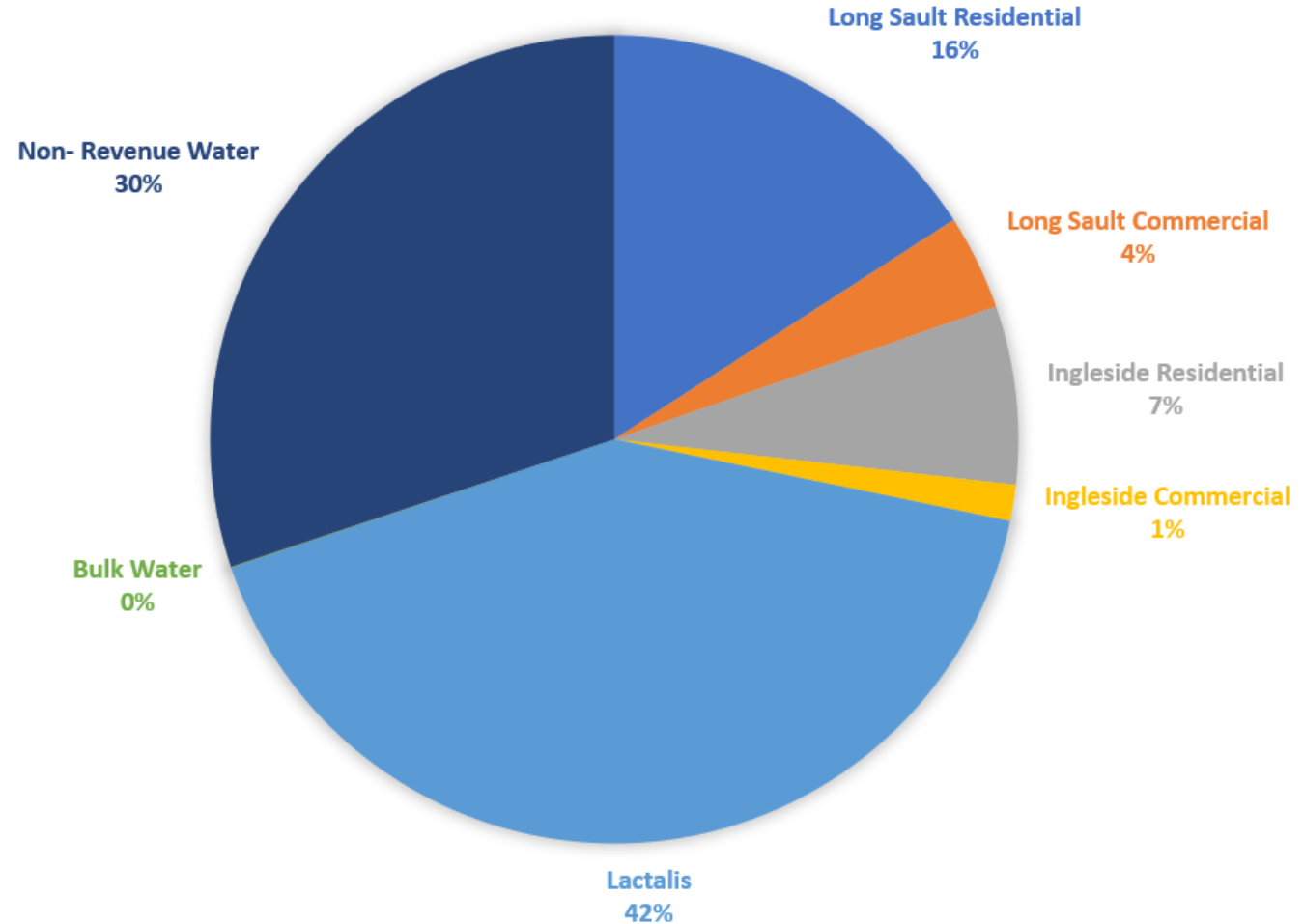
TRANSPORTATION SERVICING

- New Integrated Road Cross-Section
 - Consistent Lighting
 - Single sidewalk
- Active Transportation/Pedestrians
 - Improved sidewalk connectivity
- Deficient Road Condition Correction
 - Integration of road condition assessments into master servicing plan.
- Planned Outcome
 - Annual road construction projects that address condition and servicing issues

WATER DEMAND MANAGEMENT

- Water Treatment Capacity
 - Plant capacity expansion is still required
 - Class EA for expansion in progress
 - Implementation in 2024
- Water Demand
 - Average per capita use residential – 285 Lpcd
 - Non-revenue water – approximately 30% of total

BREAKDOWN OF REVENUE AND NON-REVENUE WATER USAGE



WATER SYSTEM BOTTLENECKS



Treatment Capacity –
2024/2025 need.

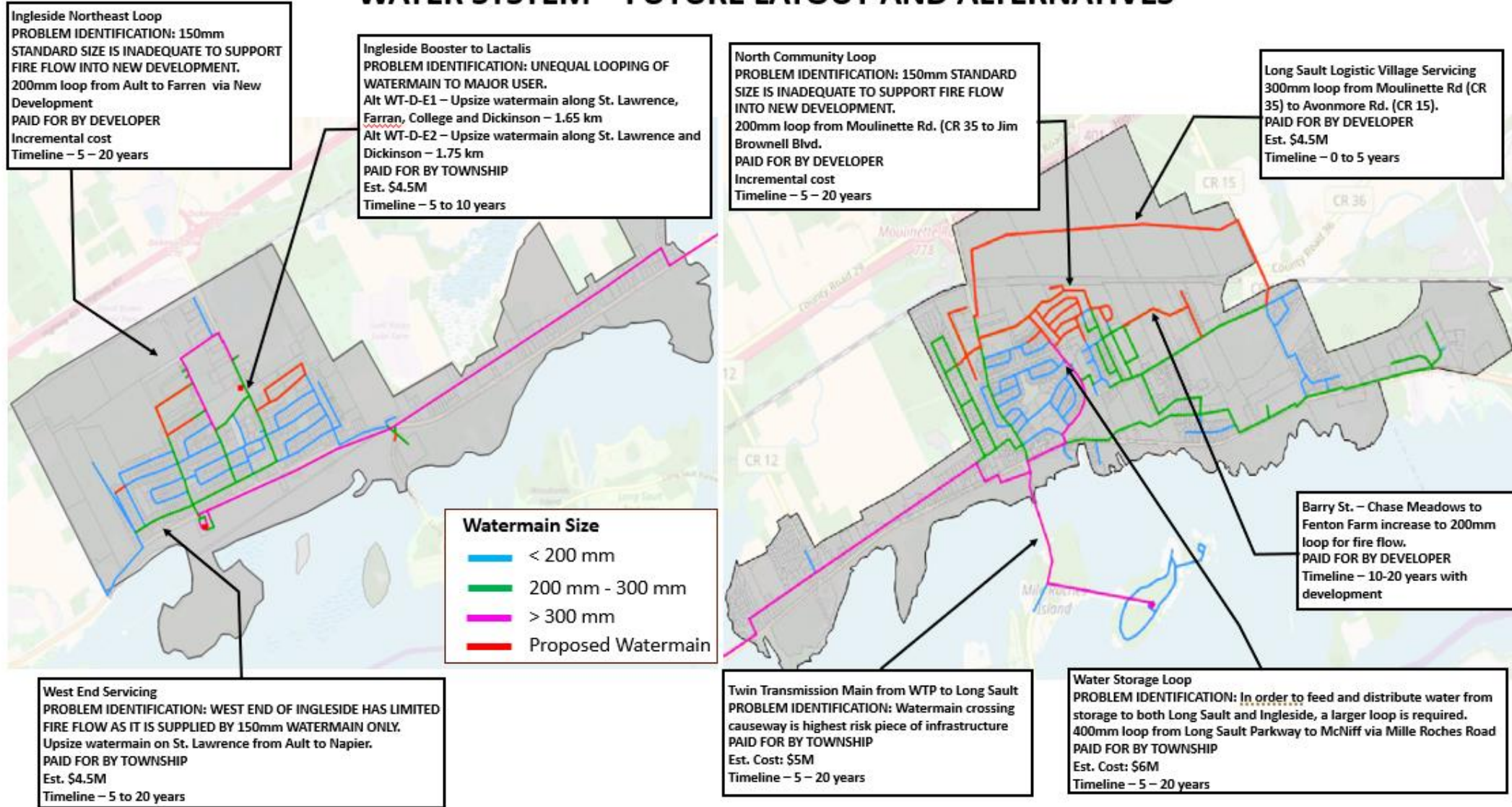


Age – Too much of the
infrastructure is original.



Storage – Not an
immediate need.

WATER SYSTEM – FUTURE LAYOUT AND ALTERNATIVES



WATER SERVICING – BIG PICTURE

- Limited current problems beyond treatment capacity. \$3M (2023 \$).
- Infrastructure renewal will be an ongoing issue.
- System upgrades represent \$20M +/- \$1M (2023 \$) per year minimum investment
- Storage is later in the design horizon. 10-20 years. \$10-12M (2023 \$)
- Works need to be integrated with other servicing components (sanitary sewer, stormwater, road cross-section).

SANITARY SERVICING



INGLESIDE WWTP EXPANSION
REQUIRED FOR GROWTH
(IMMEDIATE)



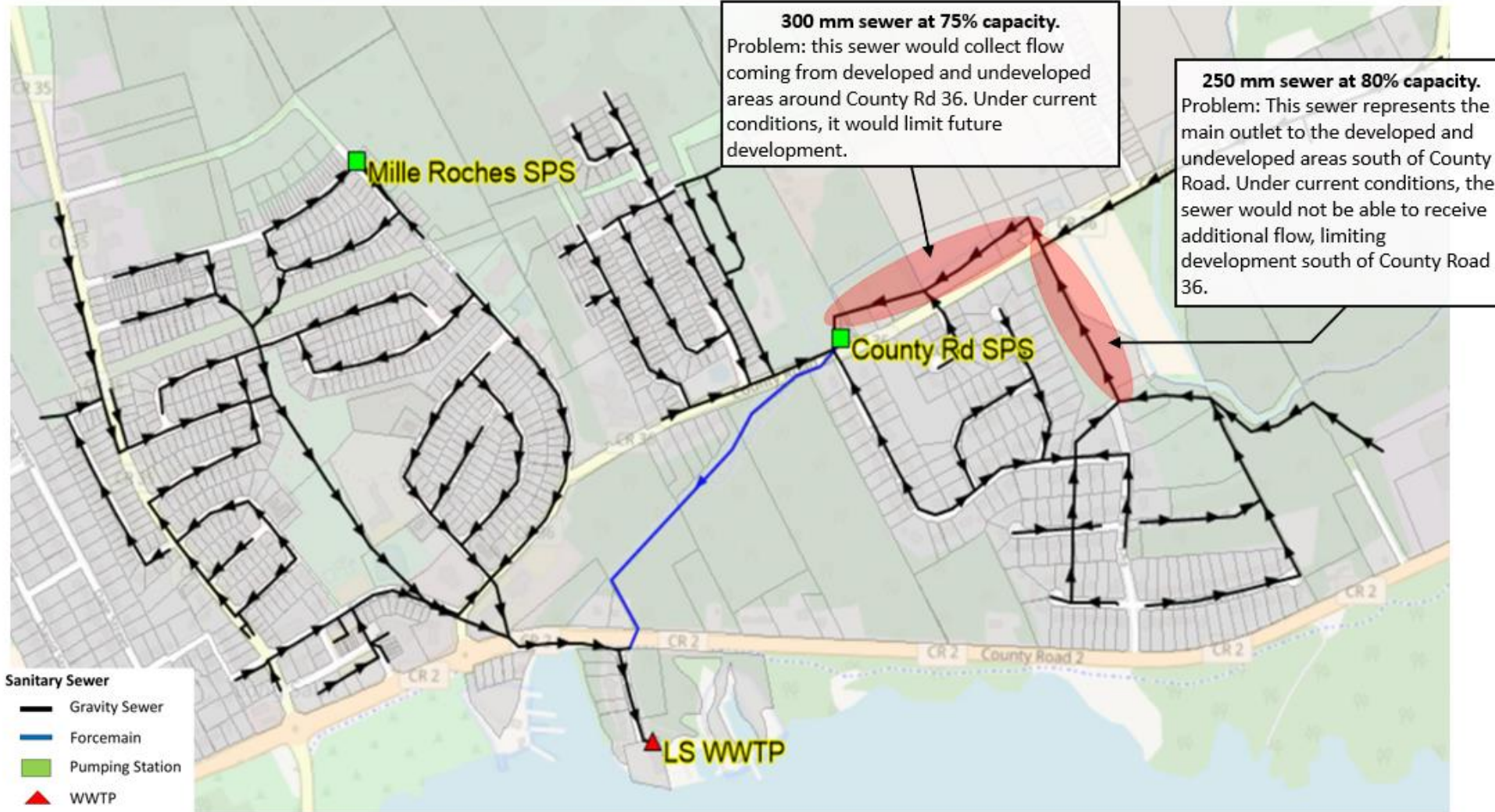
LONG SAULT WWTP EXPANSION
REQUIRED FOR GROWTH (WITHIN 5
YEARS)



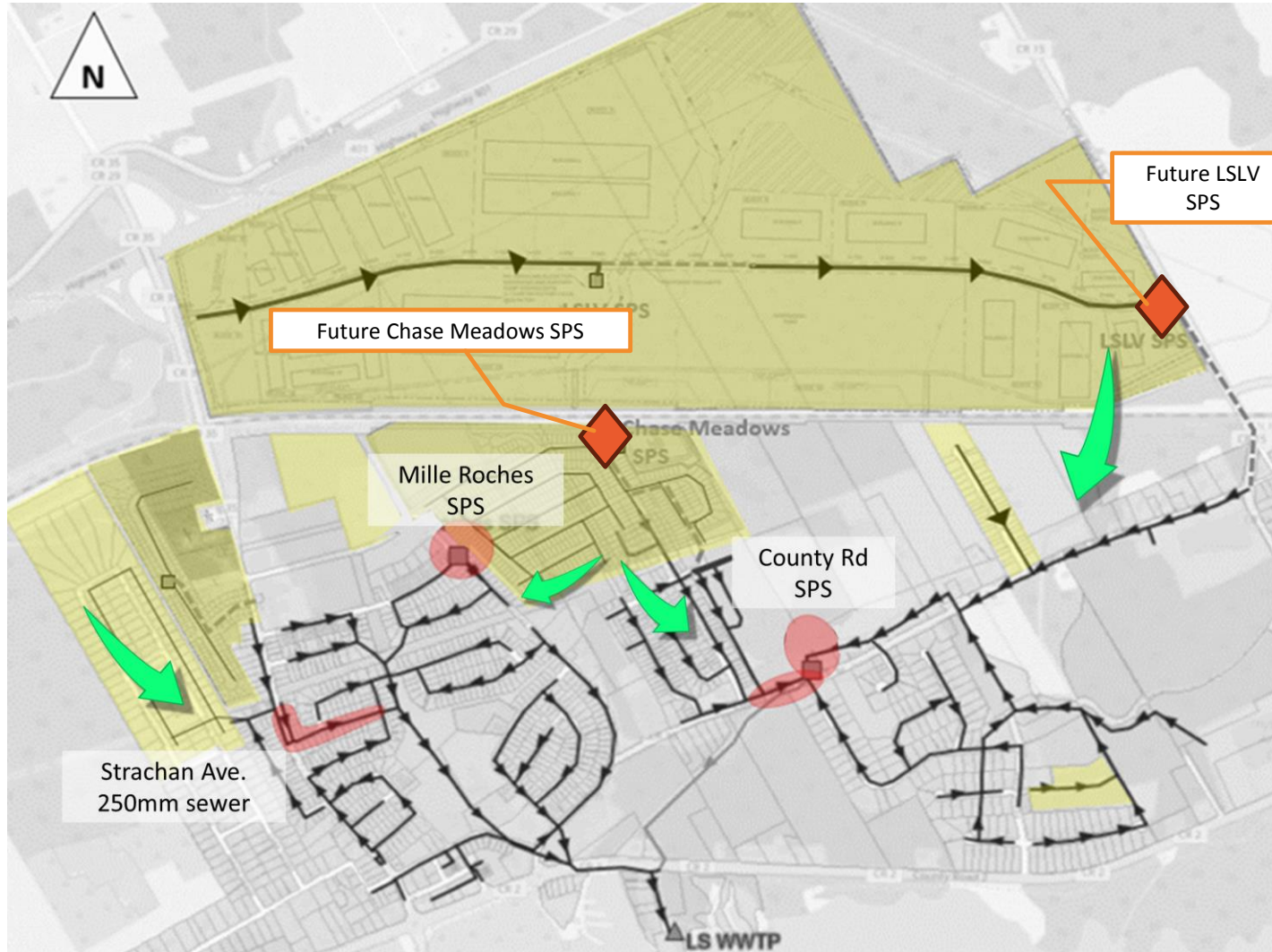
AGE AND INFILTRATION/INFLOW IS
AN ISSUE.

LONG SAULT

SANITARY SYSTEM – EXISTING CONDITIONS AND BOTTLENECKS



Long Sault Sanitary System – Future Conditions



- Bottlenecks develop with growth.
- Options include:
 - Decentralized Collection Model
 - Centralized Collection Model
- Decentralized is easier for the Township to implement as all of the work is by developers. Four pumping stations required.
- Centralized requires more coordination and investment by Township. Two pumping stations required.

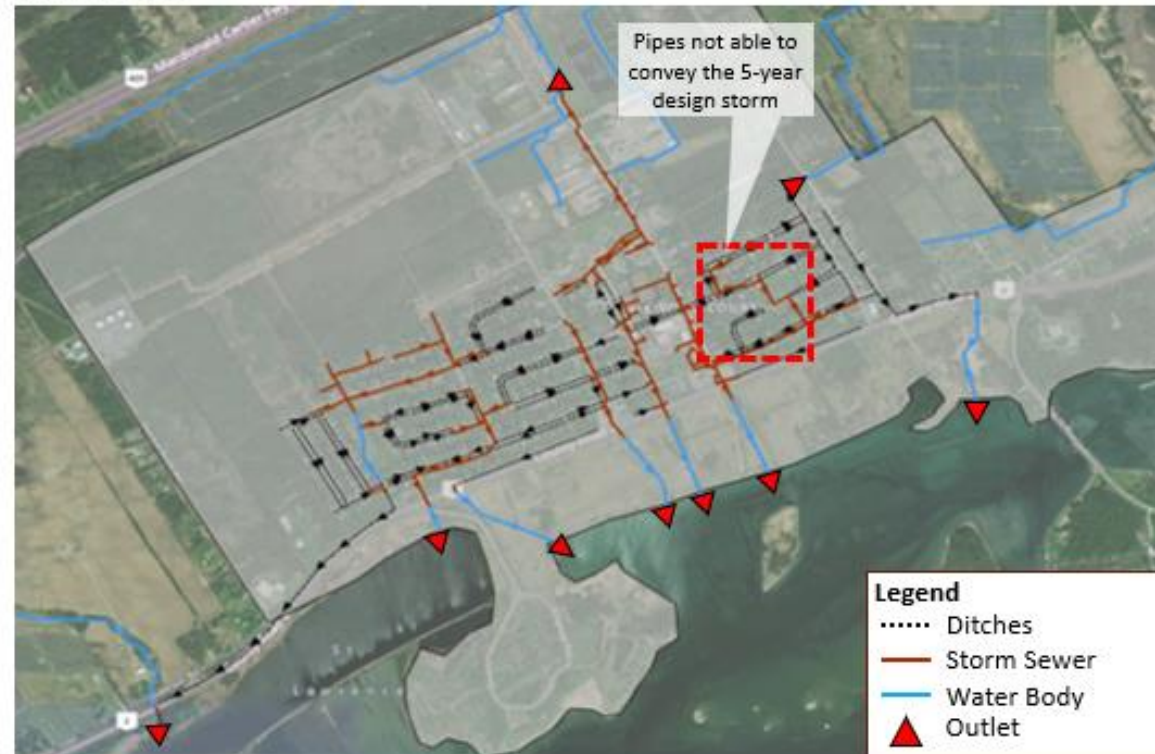
SANITARY SERVICING – BIG PICTURE

- Plant Expansions are the immediate priority.
- Ingeside infrastructure has adequate collection capacity.
- Age and renewal are an issue in both systems.
Focused renewal program
- Long Sault requires coordinated effort for efficient system expansion. Township may need to invest in capacity and recover cost from future developments.

STORM WATER SYSTEM SERVICING

- Neither system is significantly urbanized.
- Quality and Quantity Management is limited to new developments
- Quantity control is not required for direct discharge to St. Lawrence
- Quality control is required for new developments and renewal.
- Existing bottlenecks limited to Ingleside.

INGLESIDE



FUTURE DEVELOPMENT AND RENEWAL

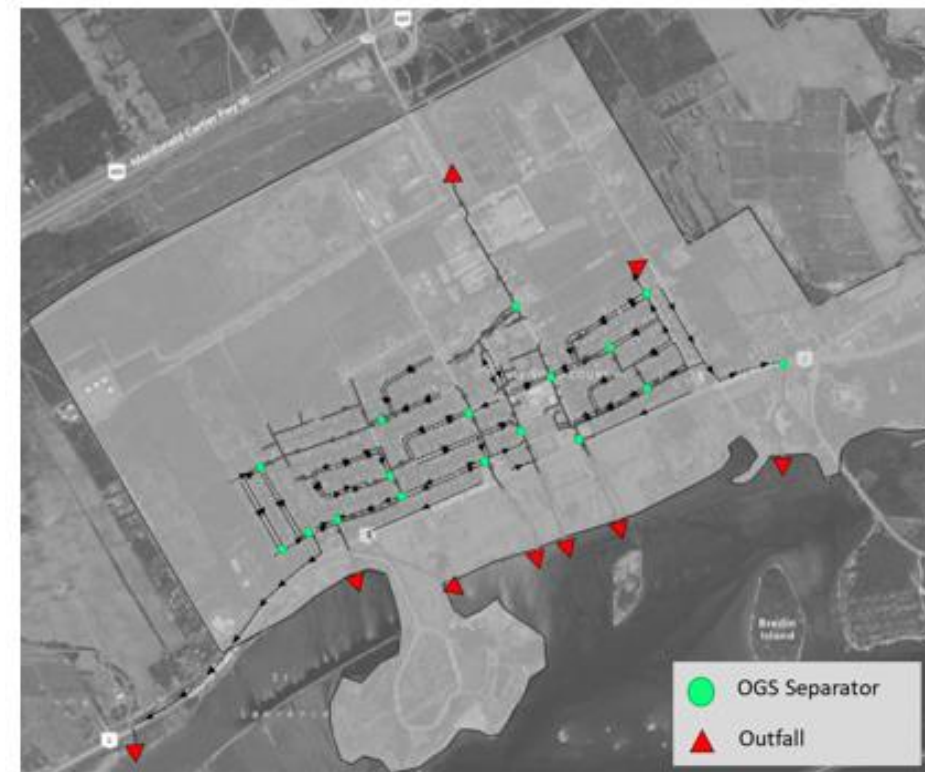
LONG SAULT CONFIGURATION



Estimated Costs: \$4.5M (+/-25%)

- Long Sault: End of Pipe Solution
- New Developments: Centralized or Individual Systems depending on location

INGLESIDE CONFIGURATION



Estimated Costs: \$3.0M (+/-25%)

- Ingleside Existing: Treatment unit with each renewal project.
- New Developments: Centralized or Individual Systems depending on size of development

STORMWATER MANAGEMENT SERVICING – BIG PICTURE

- Existing conditions are generally acceptable.
- Upgrades will be driven by other infrastructure renewal projects (watermain, road, sanitary sewer).
- No current regulatory pressure to advance the projects independently.
- Oversizing of facilities for new developments may require Township contribution. This would be recoverable from future developments.

PUBLIC CONSULTATION CENTRE

- October 17th, 2023 – 5 – 7 pm – Township Hall
 - Self-guided Open House Format
 - Summary of Project
 - Divided by common and community specific boards
 - Problem Identification, Bottlenecks and Alternatives
 - Township and Consultant team members available to answer questions
- November 7th, 2023 – 5 – 7 pm – Township Hall
 - Self-guided Open House Format
 - Summary of Project
 - Divided by common and community specific boards
 - Alternative Analysis, Preferred Alternatives, Costs and Implementation plan.
 - Township and Consultant team members available to answer questions

NEXT STEPS



Public Consultation
Comment Review and
Integration



Stakeholder Follow-up
and Comment
Resolution



Completion of Draft
Master Servicing Plan



Development of Capital
Implementation
Recommendation Plan



Issue Notice of
Completion



30-day Review Period



Finalize Master
Servicing Plan

QUESTIONS?

Jamie Witherspoon, P.Eng., LEED AP, ENV SP
Senior Project Manager

Jamie.Witherspoon@wtinfrastructure.ca

